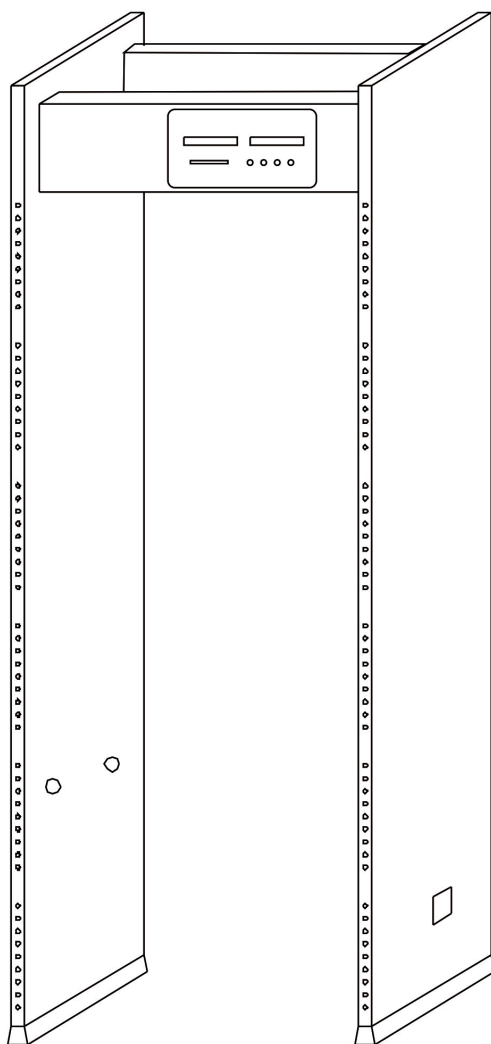


Walk Through Metal Detector



S E - 6 0 0 6 / S E - 1 8 0 6 / S E - 3 3 0 6

User Manual

【NOTES】

PLEASE READ THE FOLLOWING INSTRUCTION CAREFULLY BEFORE OPERATION:



1. This system is designed for indoor use. If you need to use it outdoors, be sure to use a canopy or other shelter to protect it from weather.
2. Choose a smooth and stable installation location to avoid false alarms caused by instability.
3. Make sure the position of the left and right detector heads in the panels are correct before installation.
4. It will have a 1 minute self-inspection after power-on.
5. People walking through the detector should abide by the predefined standby time and alarm time (>1 s) when checking. They should walk through one by one. They should also avoid “crowding” around the detector to prevent interference with the detector and normal operations.
6. Don't bump or move the detector during security operations.
7. To avoid accidental damage it is recommended that only a qualified technician assemble and disassemble the HV control.
8. The detector is covered with a Two Year Warranty. Be sure to fill out the warranty card.

【PRODUCT SPECIFICATION】

The Walk through metal detector, or WTMD for short, is used primarily to check for metal objects hidden on or in the human body. When the people walk through the WTMD, it will alarm and display the alarm zone where the item is detected, if the metal size in human body is more than the predefined metal parameter of weight, quantity or shape. Security staff can easily identify the location of the prohibited metal items.

Our WTMDs are among the best and most sensitive metal detectors on the market today.

【INSTALLATION ENVIRONMENT】

1. Stationary Metallic Items

When installing the WTMD, be sure to select an area that is free from large stationary or moving metal, as this could impact the sensitivity and operation of the unit. One should inspect the area for metal items such as: aluminum alloy / stainless steel doors and windows, with reinforced wall, etc. It is recommended that the detector be placed at least 1.5 meters from any large stationary metal objects

2. Movable Metallic Items

Big metal items that can be moved, should be at least 5 meters away from the detector. It is recommended to install the detector at factory entry point on the ground floor. Pay attention to the effect of rolling gates, iron security doors, elevators, etc.

3. Floor Vibration

The floor should be flat and fixed to avoid false alarms from movement of people or equipment near the arch.

4. Electromagnetic Radiation And Electromagnetic Interference

Because the device uses bilateral transceiver technology, it is recommended that electromagnetic interference sources and electromagnetic radiation sources remain at a distance of at least 1 - 2 meters from the detector.

Examples of electromagnetic interference sources and electromagnetic radiation sources are as follows: Electrical Control Box, Radio Equipment, Intercom, Electronic Computer And Peripheral Equipment, Video Monitor, High Power Motor, Power Transformer, AC Power Lines, Thyristor Control Circuit (High Power Switching Power Supply, Inverter Welder), Engine, Motor etc.

5. Side-By-Side Use (2 or more WTMD)

When installing more than 2 or more WTMDs side by side, there could be a certain degree of influence between each WTMD. The distance between 2 WTMDs should not be less than 50cm. Specific distance parameters could change based on the actual environment and the selection of the working frequency of each detector.

6. Do not install the detectors where they may be subject to high winds or other disturbances.

【PERFORMANCE AND FEATURES】

Accurate Positioning: 6/18/33 overlapping network detection zone, bilateral transmit and receive will accurately show the location of the detected objects.

Micro Processor Technology: the electromagnetic wave generated by the microcomputer control circuit can be precisely controlled. All the parameters can be set through the control panel as needed to ensure the best sensitivity, flexibility, reliability and stability.

Sensitivity Adjustable: each detection zone has 100 sensitivity levels (0 ~ 99). Preset programs allow you can exclude coins, keys, jewelry, etc.

Digital Pulse Technology: Digital Signal Processing(DSP) and filtering system has excellent anti-interference ability.

Password Protection: only the correct password can change the sensitivity and other parameters. Password with five digits, can be set by the user.

Count Statistics: pass count and alarm count.

Harmless to Human Body: harmless to heart pacemaker, pregnant women, magnetic floppy disk, recording tapes etc.

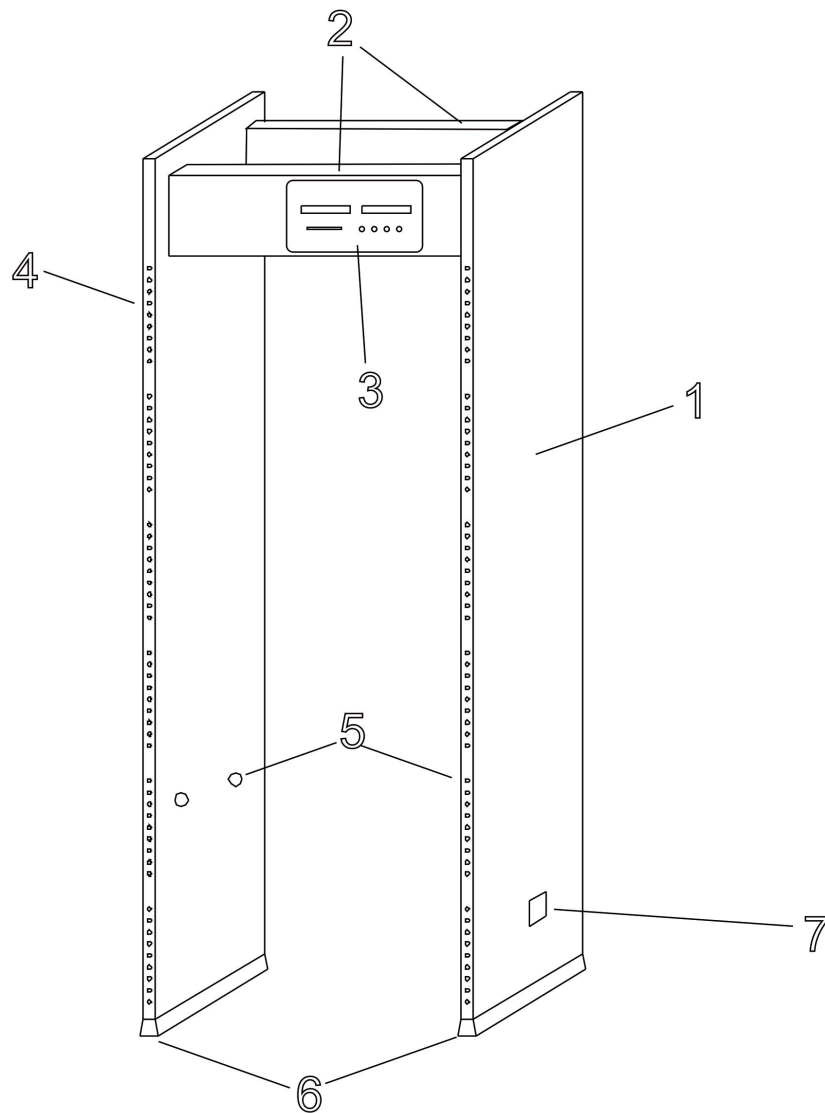
Power Supply Security: waterproof power supply.

Waterproof Foot Cover: foot cover is also waterproof.

Waterproof: PVC synthetic materials and special technology help make the entire system waterproof, fireproof, shockproof.

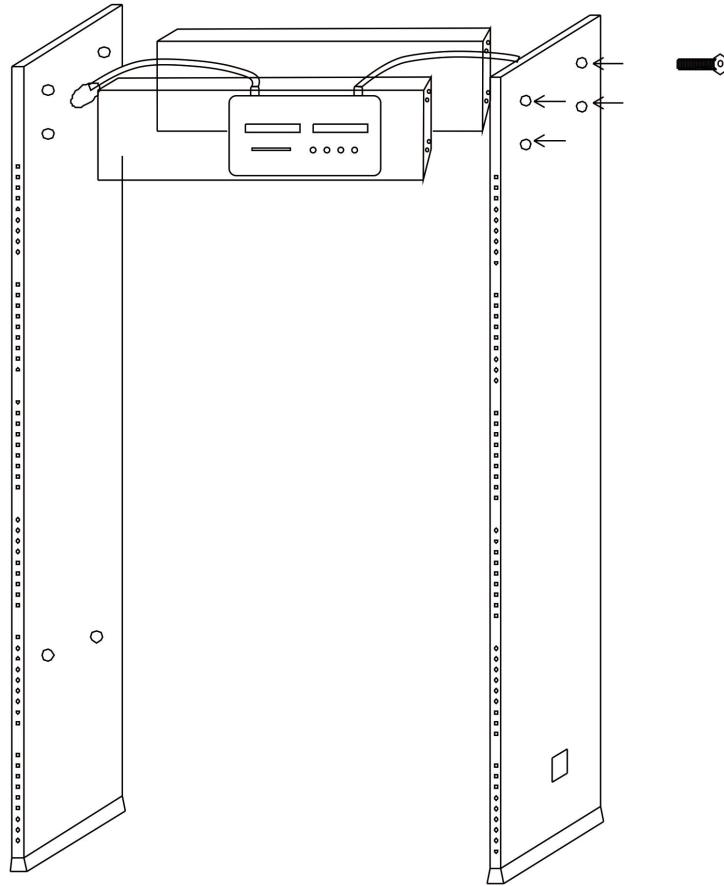
Easy to Install: the system is simple to assemble and disassemble, and can be done in less than 20 minutes to complete the installation or disassembly.

【PARTS】



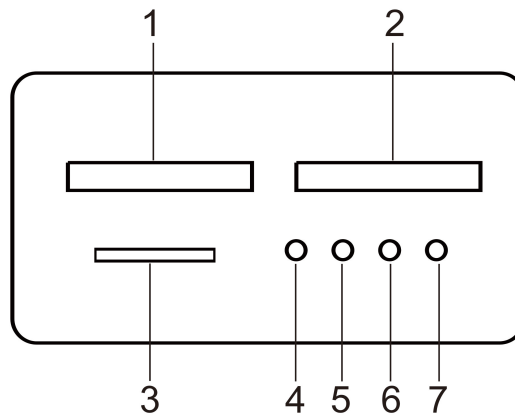
1, Door Panel 2, Crossbar 3, Integrated Host 4, Alarm zone LED 5, Infrared Sensors 6, Waterproof Foot Cover 7, Power Line&Signal line Interface

【INSTALLATION】



- 1.Remove the Integrated Host and the packaging of the door panels.
- 2.The main chassis display panel up, left and right side of the door as shown in the figure, then connect the left and right door to the main box respectively with bolts and nuts locked tightly。
- 3.Make sure the door probe line on the left and right were tightly inserted into the corresponding socket on the motherboard, pay attention to tighten, do not loose.
- 4.Raise the metal probe door to the vertical position and move to the specified working position.
- 5.Make the power line in the door side of connected to the power supply into the working state.

【CONTROL PANEL】



1. **LED Digital Display:** displays the number of people who passed through the detector.
2. Alarm Counter.
3. **Interference Signal Strength Indicator:** alarm indicator (red light)
4. **"ENTER" Key:** confirm the data after setting, and use as plus key when setting the sensitivity.
5. **"SETUP" Key:**
 - ① set variables, and use as minus key when setting the sensitivity.
 - ② long press 5s to adjust working frequency, 1~16 bands to choose.
6. **"SELECT" Key:** choose each program, and use as plus key when entering password .
7. **"RESET" Key:** clears the number of passers and alarms.

[DETECTION ZONES]

A: Control Unit: signal strength indicator, the number of passers and alarms
Standby Indication: indicator in red when alarming.

B: LED bar Alarm

As shown in Figure-1, there are six sets of unique pinpointing LEDs, which represent six detection zones(from bottom to top 1.2.3.4.5.6). Same for Figure-2 and Figure-3. Pinpointing LEDs have 2 states in red - bright or dim. The LED show red when a person's body or metal content exceed prescribed tolerances. If there are multiple targets, each target location will show on the LEDs, and an alarm will sound at the same time, (Except if "muted").

C: Infrared Sensor(IR)

When the power is turned on, the WTMD starts to work, and the infrared sensor effectively prevents false alarm. The IR Sensors also count the number of people that walk through the WTMD.

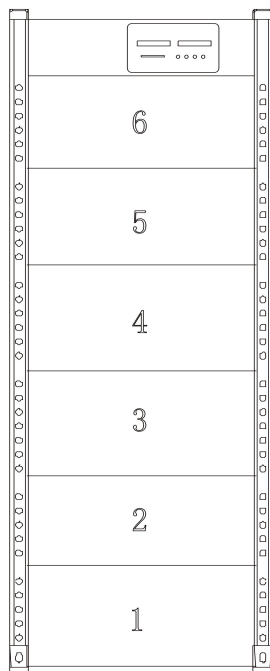


Figure-1

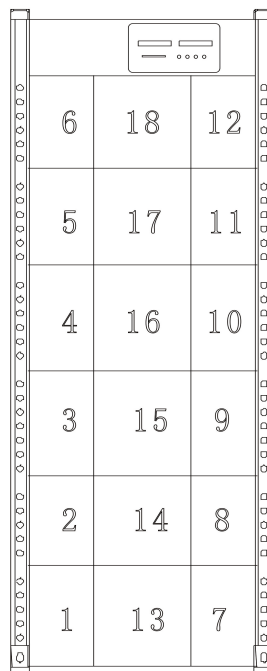


Figure-2

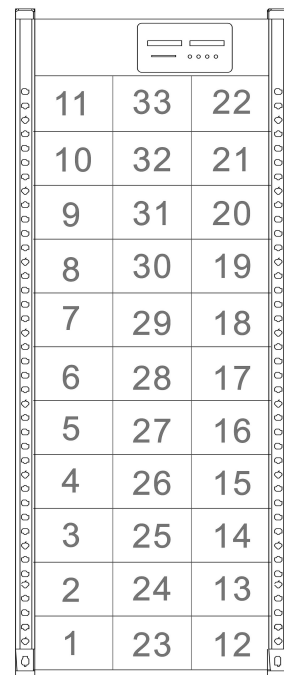


Figure-3

【OPERATION】

6 Zone Walk Through Metal Detector

1. Long press “SELECT” for 3 seconds to enter “P-0” or “P-1” mode. (“P-0” for Inspection, “P-1” for Testing Flying Objects or Test Mode.) To adjust “P-0” mode press “ENTER” to confirm entering P-0 mode.
2. Long press “SETUP” to enter “Frequency Adjustment”. The unit will show “F-xx”. “xx” means Device Frequency Code. Press “SELECT” to adjust the Frequency. Press “ENTER” to confirm the selection. In order to avoid signal interference, the frequency code of each adjacent device must be different. (For user’s convenience we have simplified the Frequencies to 16 total, which can be used for unlimited devices during an installation)
3. Pressing “SELECT” will show “12345”, which is factory original password. If you have changed the original password, please input the new correct password. (For password input details please refer to “Password Management”)
4. Press “ENTER” again to show “00000”. This means the password is correct, and you can go to next setting. If it shows “E0000”, it means the password was incorrect. You’ll need to input the correct password before being allowed to proceed to the next setting.
5. Pressing “ENTER” one more time, will show “A-6”, which means the device has 6 zones.
6. Pressing “SETUP”, will show “d-01”, which is alarm duration time. “01” means alarm duration of 1 second. Maximum alarm duration is 3 seconds. Press “SETUP” to adjust to 01, 02, 03 second.
7. Press “SELECT” again to enter Zone-Sensitivity-Level adjustment. It will show “1-xxx”, (“1” means 1st zone, “xxx” means zone sensitivity level.) Press “SETUP” to adjust the zone sensitivity level. Press “ENTER” to increase the zone sensitivity level. The higher the “xxx” figure, the higher the sensitivity!
e., Adjusting to “1-365”, means the 1st zone sensitivity level is 365. This is a very high sensitivity setting that should allow for the detection of small metal objects like coins, etc.
8. Press “SELECT” again to show “2-xxx”~“6-xxx”, and adjust them the same as the 1st zone sensitivity adjustment. You can adjust each zone to the level you desire.
9. Press “SELECT” again and it will show “H-xxx”, which means device (whole) Sensitivity-Level is “xxx”.

10. After Zone-Sensitivity-Level adjustment is finished, press “SELECT”, and you should see “AP”, which means you have entered Application Mode adjustment option. Press “ENTER” to access Application-Adjustment mode and press “SETUP” to adjust the application. Then press “SELECT” to confirm the selection. The higher the application code figure, the lower the sensitivity! (For user convenience, we have simplified the Application to 6 total, which should meet all general market requirements)

11. Press “SELECT” to enter Volume-Level adjustment, and press “SETUP” to show “yL-H”, which means high volume, press “SETUP” again to show “yL-L”, which means low volume.

12. Press “SELECT” to show “Id-xx”, which means you’ve entered Device “ID” adjustment option. “xx” means the device ID code. (Press “ENTER” one time to add “1” in single digits, press “SETUP” one time to add “1” in 10-digit. Press “ENTER” “SETUP” more times to add more respectively)

13. Press “SELECT” to show “A6”. Press “ENTER” to show “Inspection Mode”, and the device is ready to work.

14. The device will automatically display PASS COUNT & ALARM COUNT, the number of memories is 99999. press “RESET” to clear the count.

18 Zone Walk Through Metal Detector

1. Long press “SELECT” for 3 seconds to enter “P-0” or “P-1” mode. (“P-0” for Inspection, “P-1” for Testing Flying Objects or Test Mode.) To adjust “P-0” mode press “ENTER” to confirm entering P-0 mode.

2. Long press “SETUP” to enter “Frequency Adjustment”. The unit will show “F-xx”. “xx” means Device Frequency Code. Press “SELECT” to adjust the Frequency. Press “ENTER” to confirm the selection. In order to avoid signal interference, the frequency code of each adjacent device must be different. (For user’s convenience we have simplified the Frequencies to 16 total, which can be used for unlimited devices during an installation)

3. Pressing “SELECT” will show “12345”, which is factory original password. If you have changed the original password, please input the new correct password. (For password input details please refer to “Password Management”)

4. Press “ENTER” again to show “00000”. This means the password is correct, and you can go to next setting. If it shows “E0000”, it means the password was incorrect. You’ll need to input the correct password before being allowed to proceed to the next setting.

5. Pressing “ENTER” one more time, will show “A-18”, which means the device has 18 zones.

6. Pressing “SETUP”, will show “d-01”, which is alarm duration time. “01” means alarm duration of 1 second. Maximum alarm duration is 3 seconds. Press “SETUP” to adjust to 01, 02, 03 second.

7. Press “SELECT” again to enter Zone-Sensitivity-Level adjustment. It will show “1-xxx”, (“1” means 1st zone, “xxx” means zone sensitivity level.) Press “SETUP” to adjust the zone sensitivity level. Press “ENTER” to increase the zone sensitivity level. The higher the “xxx” figure, the higher the sensitivity!

e., Adjusting to “1-365”, means the 1st zone sensitivity level is 365. This is a very high sensitivity setting that should allow for the detection of small metal objects like coins, etc.

8. Press “SELECT” again to show “2-xxx”~“6-xxx”, and adjust them the same as the 1st zone sensitivity adjustment. You can adjust each zone to the level you desire.

9. Press “SELECT” again and it will show “H-xxx”, which means device (whole) Sensitivity-Level is “xxx”.

10. After Zone-Sensitivity-Level adjustment is finished, press “SELECT”, and you should see “AP”, which means you have entered Application Mode adjustment option. Press “ENTER” to access Application-Adjustment mode and press “SETUP” to adjust the application. Then press “SELECT” to confirm the selection. The higher the application code figure, the lower the sensitivity! (For user convenience, we have simplified the Application to 6 total, which should meet all general market requirements)

11. Press “SELECT” to enter Volume-Level adjustment, and press “SETUP” to show “yL-H”, which means high volume, press “SETUP” again to show “yL-L”, which means low volume.

12. Press “SELECT” to show “Id-xx”, which means you’ve entered Device “ID” adjustment option. “xx” means the device ID code. (Press “ENTER” one time to add “1” in single digits, press “SETUP” one time to add “1” in 10-digit. Press “ENTER” “SETUP” more times to add more respectively)

13. Press “SELECT” to show “A18”. Press “ENTER” to show “Inspection Mode”, and the device is ready to work.

14. The device will automatically display PASS COUNT & ALARM COUNT, the number of memories is 99999. press “RESET” to clear the count.

33 Zone Walk Through Metal Detector

1. Long press “SELECT” for 3 seconds to enter “P-0” or “P-1” mode. (“P-0” for Inspection, “P-1” for Testing Flying Objects or Test Mode.) To adjust “P-0” mode press “ENTER” to confirm entering P-0 mode.
2. Long press “SETUP” to enter “Frequency Adjustment”. The unit will show “F-xx”. “xx” means Device Frequency Code. Press “SELECT” to adjust the Frequency. Press “ENTER” to confirm the selection. In order to avoid signal interference, the frequency code of each adjacent device must be different. (For user’s convenience we have simplified the Frequencies to 16 total, which can be used for unlimited devices during an installation)
3. Pressing “SELECT” will show “12345”, which is factory original password. If you have changed the original password, please input the new correct password. (For password input details please refer to “Password Management”)
4. Press “ENTER” again to show “00000”. This means the password is correct, and you can go to next setting. If it shows “E0000”, it means the password was incorrect. You’ll need to input the correct password before being allowed to proceed to the next setting.
5. Pressing “ENTER” one more time, will show “A-33”, which means the device has 33 zones.
6. Pressing “SETUP”, will show “d-01”, which is alarm duration time. “01” means alarm duration of 1 second. Maximum alarm duration is 3 seconds. Press “SETUP” to adjust to 01, 02, 03 second.
7. Press “SELECT” again to enter Zone-Sensitivity-Level adjustment. It will show “1-xxx”, (“1” means 1st zone, “xxx” means zone sensitivity level.) Press “SETUP” to adjust the zone sensitivity level. Press “ENTER” to increase the zone sensitivity level. The higher the “xxx” figure, the higher the sensitivity!
e., Adjusting to “1-365”, means the 1st zone sensitivity level is 365. This is a very high sensitivity setting that should allow for the detection of small metal objects like coins, etc.
8. Press “SELECT” again to show “2-xxx”~“6-xxx”, and adjust them the same as the 1st zone sensitivity adjustment. You can adjust each zone to the level you desire.
9. Press “SELECT” again and it will show “H-xxx”, which means device (whole) Sensitivity-Level is “xxx”.
10. After Zone-Sensitivity-Level adjustment is finished, press “SELECT”, and you should see “AP”, which means you have entered Application Mode adjustment

option. Press “ENTER” to access Application-Adjustment mode and press “SETUP” to adjust the application. Then press “SELECT” to confirm the selection. The higher the application code figure, the lower the sensitivity! (For user convenience, we have simplified the Application to 6 total, which should meet all general market requirements)

11. Press “SELECT” to enter Volume-Level adjustment, and press “SETUP” to show “yL-H”, which means high volume, press “SETUP” again to show “yL-L”, which means low volume.

12. Press “SELECT” to show “Id-xx”, which means you’ve entered Device “ID” adjustment option. “xx” means the device ID code. (Press “ENTER” one time to add “1” in single digits, press “SETUP” one time to add “1” in 10-digit. Press “ENTER” “SETUP” more times to add more respectively)

13. Press “SELECT” to show “A6”. Press “ENTER” to show “Inspection Mode”, and the device is ready to work.

14. The device will automatically display PASS COUNT & ALARM COUNT, the number of memories is 99999. press “RESET” to clear the count.

【PASSWORD MANAGEMENT】

1. Password Management

Password Enter:

- 1) Press "SELECT" key, the panel shows "12345".
- 2) Press "SETUP" key, the panel display as "1-345". "_" is a modify command to set number, press the "SETUP" key, "_" can be cycled to the right.
- 3) Press "SELECT" key, as plus key when setting the password number with "_" .
- 4) After entering the correct password, press “ENTER” key. If display shows "00000", it means the password is set up. If display shows "E0000", it means the password is wrong, and you need to press "ENTER" key to re-enter the correct password.
- 5) Then press "ENTER" key, display shows "d-01", then press "SELECT" key to enter the next step.

Password Change:

- ① Press "SELECT" key to display “12345”. To change the password, enter your new password. Follow steps listed above.
- ② If you forget the password, press "SETUP" → "SELECT" to change "E0000" into "88888" then press "ENTER", and display should show “00000”. Press "SELECT" to enter the number, then press "SETUP" to change next number
- 6) Enter the password to be set by pressing "ENTER" key. There will be "A-6" for 6-zones, "A-18" for 18-zones, "A-33" for 33-zones. Press “ENTER” key again, and the password is set up.
- 7) If forget password, you can long press "ENTER" to restore to the initial password "123456".

2. Zones Distinction:

- 1) **6-zones:** from bottom to the top 1~6 zones are evenly distributed.
 - ① 1~6 zone sensitivity is proportional to the number of zones.
 - ② "H" is overall sensitivity. The sensitivity is proportional number of zones.
- 2) **18-zones and 33-zones:** from bottom to top 1~18/1~33 zone are evenly distributed.
 - ① 1~18/1~33 zone sensitivity, the sensitivity is proportional number of zones.
 - ② "H-xxx" is overall sensitivity, the sensitivity is proportional number of zones.

【OPTIONAL FUNCTIONS】

PC Networking, Turnstile Integration, UPS, Camera, etc.

【DETECTION ADJUSTMENT】

1. Install the Walk Through Metal Detector in a stable state to achieve the best detection results (Please refer to "Installation Environment") Below are steps for ensuring that the Walk Through Metal Detector is in a steady state:

- 1) 1 minute after start up, the Walk Through Metal Detector gate should be stable.
- 2) During testing, there should be no alarm sound when tester passes through the Walk Through Metal Detector without carrying any metal items.
- 3) Considering the above two situations, the Walk Through Metal Detector is in a stable operating state.

2. To exclude the influence of small metal objects such as rings, keys, belt buckles, shoes, etc. adjust using the following steps:

- 1) Take a small metal objects as sample, which is not within the (Walk Through Metal Detector) detection boundaries, such as a string of keys.
- 2) Set the sensitivity to a higher level, then let test person take the sample & pass through the walk through metal detector. It should sound an alarm.
- 3) Lower the sensitivity until the tester can pass through the detector without causing an alarm.

Notes: If you need certain detection zones at lower sensitivity, then you only need to adjust the relevant detection zone.

3. Passing Rules

- 1) Draw a waiting line 50cm away from the front or back of the walk through metal detector, so that the people being detected are queued to pass one by one

2) Before passing through the walk through metal detector, people should place metal objects (such as keys, mobile phones, employee card, cigarettes, coins, etc.) on the side of the walk through metal detector on a chute or wooden table. After successfully passing they may retrieve their items from the table.

【FAQ】

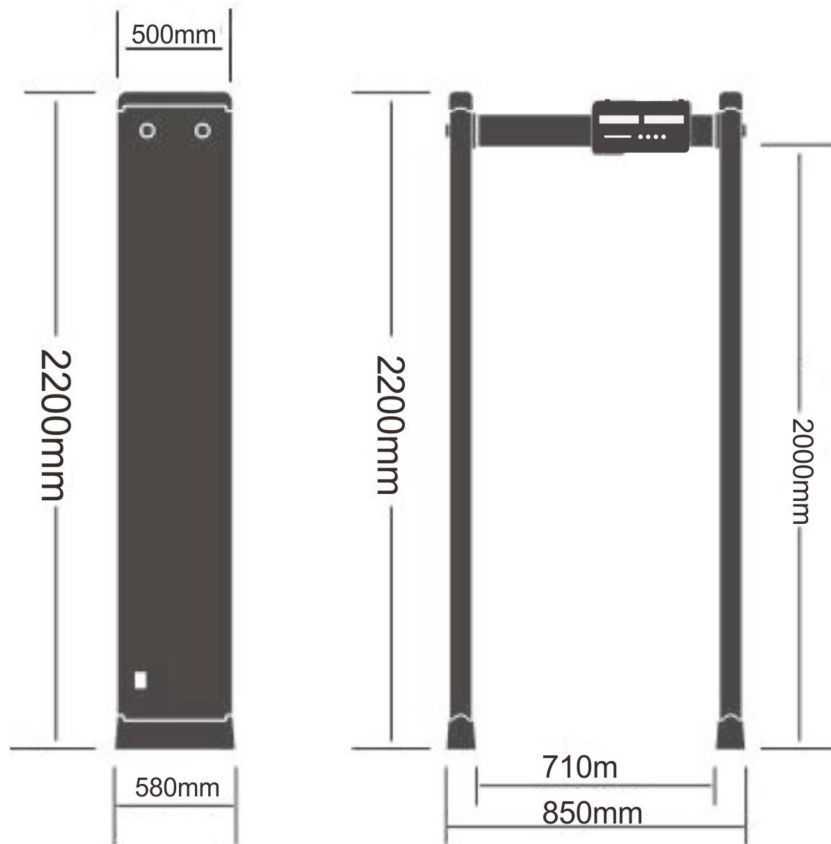
1. Infrared does not count.

- 1) Please check if the left and right panel are properly connected to the detection head.
- 2) Please check if there is infrared interference near the left and right side infrared head. i.e.: infrared CCTV camera, infrared remote controller (when pressing the button), outdoor sun exposure and so on.
- 3) If there's no problem with both 1) and 2), please change and replace the infrared head.

2. False alarms or Nuisance Alarms.

- 1) First, consider the installation environment. There should be no moving or static large metal objects within a distance of 1.5M. If there are large metal objects, move the detector to a new location or remove the metal from the area if possible. Also, be aware of vibrations in the area that could cause metal in the area to move near the detector, such as opening and closing doors, wind, air conditioning units, etc.
- 2) If there is no environmental factor, reduce sensitivity levels on the overall sensitivity and zone sensitivity. If you continue to experience high false alarm, then try the following:
 - a. Adjust the frequency range of the detector to eliminate possible interference from other sources.
 - b. Make sure there is no Frequency Conversion Equipment working near the device. Such as, elevator that with a frequency converter, or the injection molding machine, etc., because these machines will cause serious interference to walk through metal detector while working .
 - c. If none of the above options results in stable operations, it is recommended to change the location of the detector to a new, more stable location and environment.

【TECHNICAL PARAMETERS】



Working Voltage.....	100-240VAC
Power Frequency.....	50-60Hz
Power Consumption.....	<20W
Working Temperature.....	-10°C~45°C
Dimension.....	MM
External Height.....	2200
External Width.....	850
Internal Height.....	2000
Internal Width (Standard).....	710
Depth.....	500
Weight.....	52KG

【FACTORY PARAMETERS】

6 Zones Walk Through Metal Detector

Product Name	Walk Through Metal Detector
Alarming Time	1 second
Sensitivity(1-6 detection zones)	99
Menu Password	12345

18 Zones Walk Through Metal Detector

Product Name	Walk Through Metal Detector
Alarming Time	1 second
Sensitivity(1-18 detection zones)	99
Menu Password	12345

33 Zones Walk Through Metal Detector

Product Name	Walk Through Metal Detector
Alarming Time	1 second
Sensitivity(1-33 detection zones)	99
Menu Password	12345

【PACKING LISTING】

Thank you for purchasing our Walk Through Metal Detector. Please check and make sure that the following items are included in the box. If any items are missing or damaged, please contact us.

Hexagon tool 8 sets of bolt Instructions Power cord

【WARRANTY CARD】

1. Please keep this card and present it at the time of repair
2. Please make sure all information is filled out correctly. Send a copy to PTI and keep a copy in your records.

Product Model	
Product Code	
Purchasing Date	
User Contact	
Postal Code	
Address	
User Tel.	
Fax	

Maintenance records

[illegible]